

open mind & open up

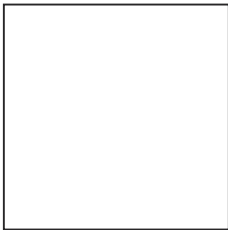
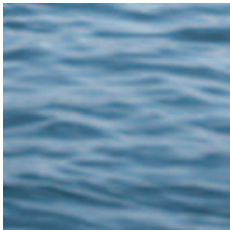
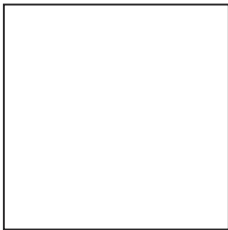




Vision. Transparency. Clear design. Concentrating on the essential, open mind motivates with exceptional freedom of movement. Lean back and relax. Correct posture is ensured by this aesthetically pleasing swivel chair. With its innovative backrest frame and highly flexible membrane covering in a refreshing range of colours. Unconstrained by time or place. Open to new tasks – **Place 2.5**

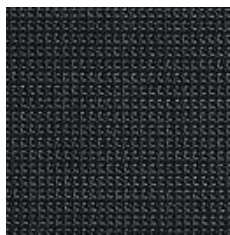
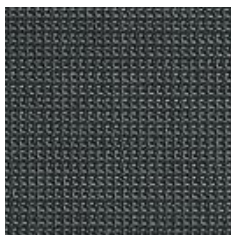
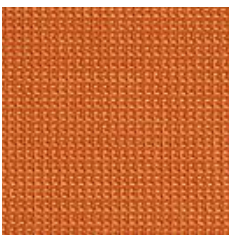


Perfect form. Perfect ergonomics. open mind does not compromise. The high-quality backrest frame, formed as a single unit, lends this chair its distinctive design. Relaxed working and total freedom of movement are guaranteed by the "Similar" mechanism with its extra-large opening angle. The patented Sedo-Lift mechanism provides soft cushioning for all sizes of user, even in the lowest sitting position.

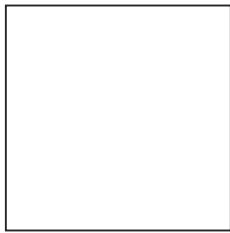




Headrest. The functional headrest is fully adjustable to suit your height and working posture.



Membrane. White, blue, green, orange, mid-grey or black: open mind brings a splash of colour to the office. Highly flexible. Transparent. Exciting.



3D armrests. Comfort that adapts. In every direction. In a choice of plastic, leather, gel or Soft-touch.



Lumbar support. With a 100 mm range of height adjustment, the optional lumbar support relieves strain on your lower back. Relaxed working means efficient working.



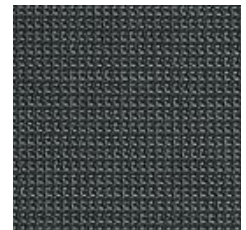
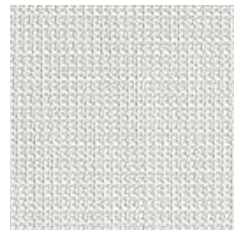
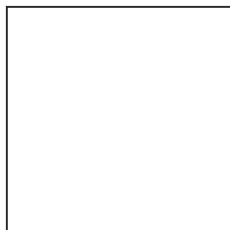
Sliding seat. The seat has a 60 mm range of sliding adjustment. The patented system keeps the seat shell ideally positioned in relation to the backrest.



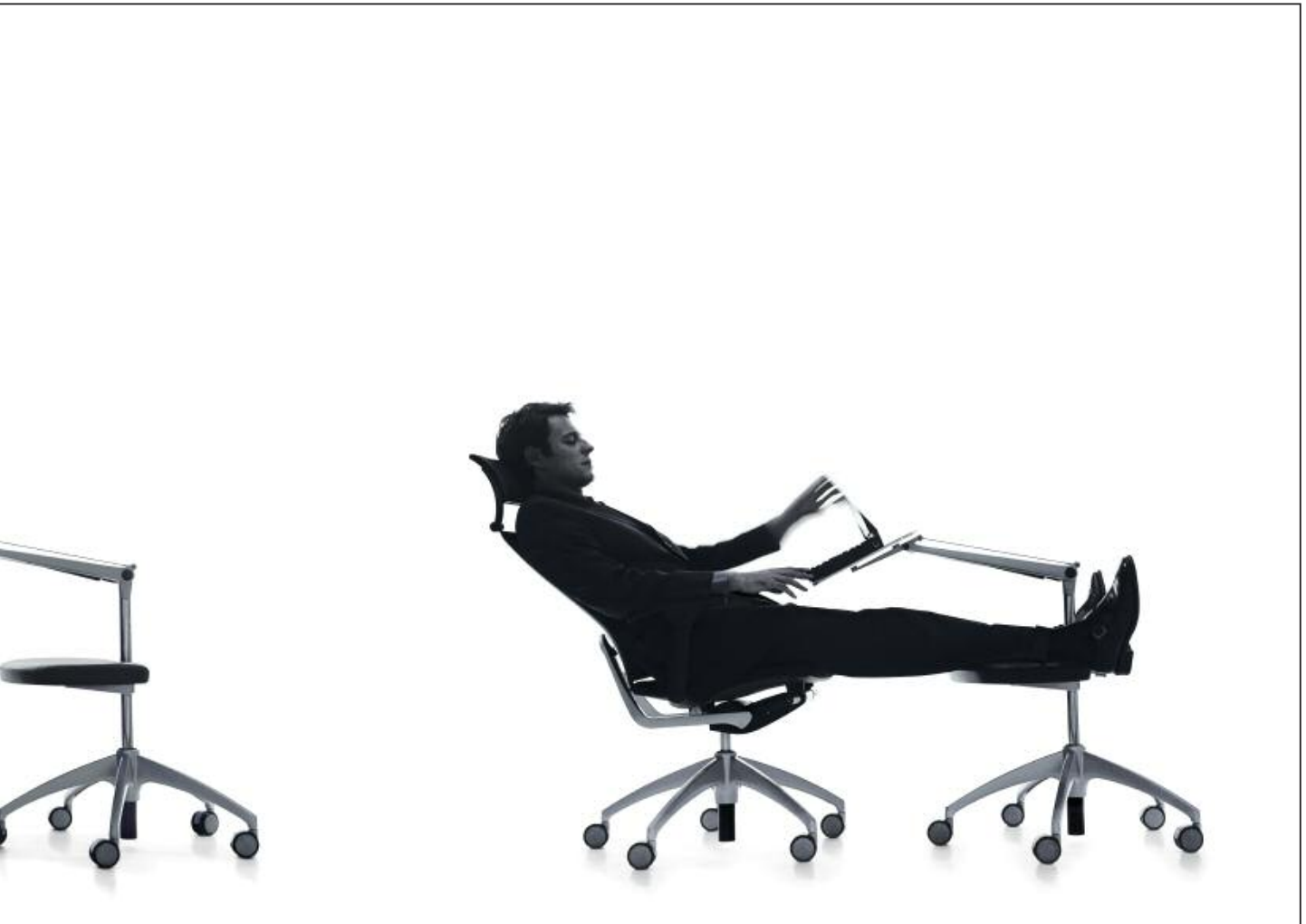
Motivation comes from being able to lean back and relax during a hard working day. Switch off and free up your thoughts – no problem when you have open up in the office. Whenever you need to clear your head. Sitting, standing, lying; this elegant office chair with integrated “Similar” and dorsokinetic mechanisms makes any position possible. Freedom of movement releases the mind. The perfect inspiration for efficient working – **Place 2.5**



Upright or horizontal – you decide which is your best working position. Thanks to the “Similar” mechanism, the backrest reclines to an angle of up to 45 degrees. Just right for relaxed working or for a reviving power nap before tackling your next task. Backrest pressure and headrest are adjustable to suit each user's personal preference. A revolution in movement in the office.



Backrest. Freedom of movement. Freedom of design. With a range of membrane colours or fine fabric of leather upholstery pads, open up brings invigorating variety to any office.



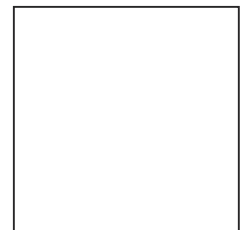
Dorsokinetic mechanism. With the flexible backrest connection, open up supports your every movement. Sideways. Backwards. Always.



Lumbar support. Height-adjustable strain-relief for the lower back. An optimal feature to keep you walking tall.

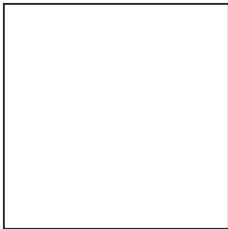
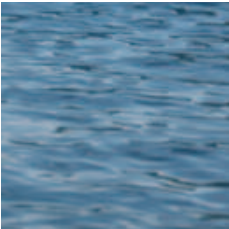
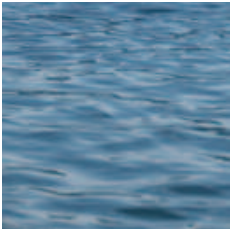


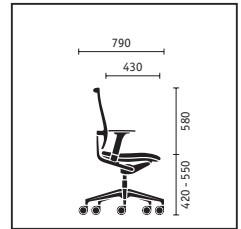
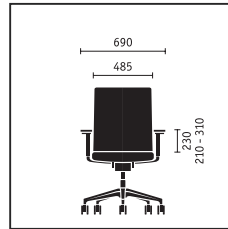
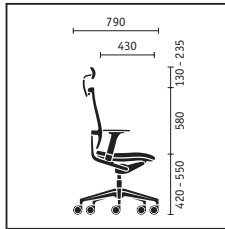
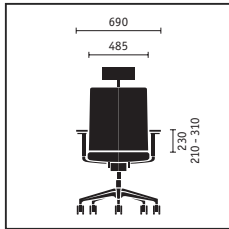
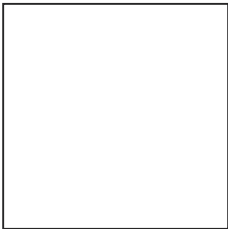
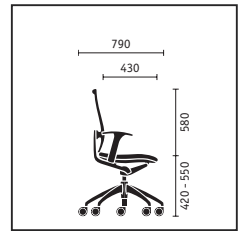
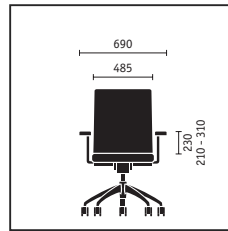
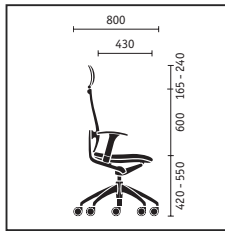
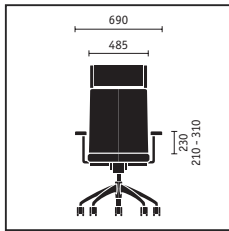
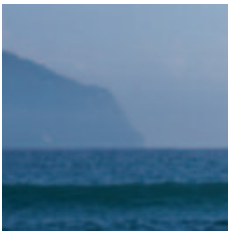
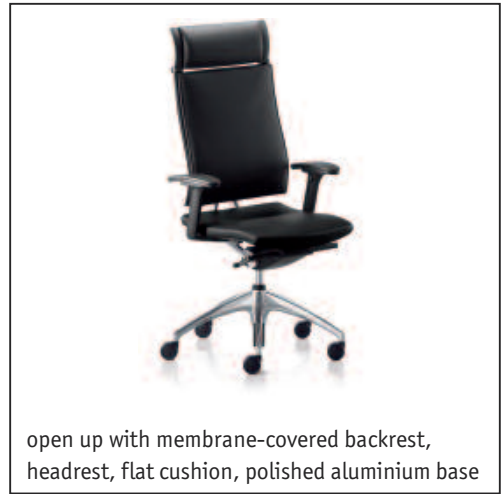
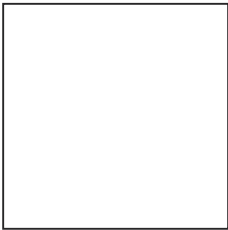
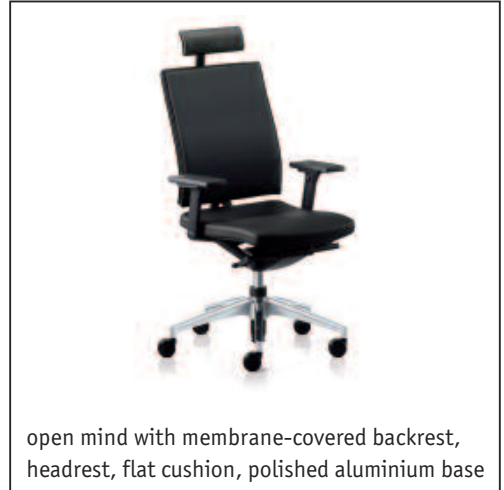
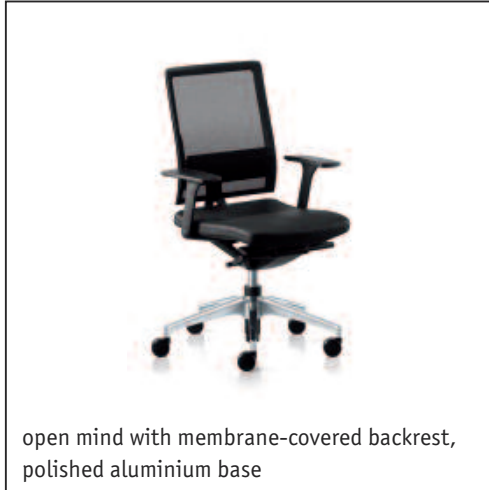
Work assistant. In an instant, the work assistant converts into a lectern. The ottoman is the ideal mobile legrest for a lying position. Perfect posture variation.



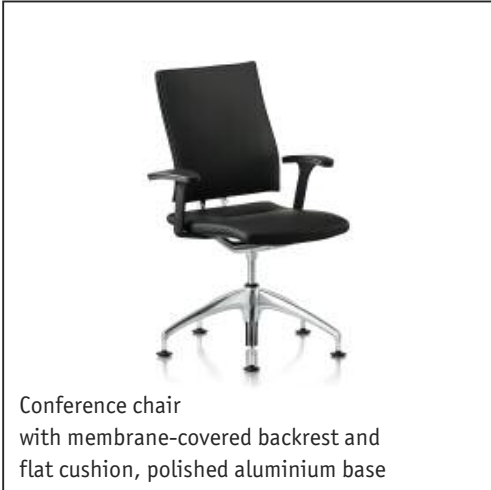


Family. With rest comes strength. With dialogue comes progress. The open up and open mind family helps team players to keep their cool. In every conference. In every meeting. Whether swivel chair or cantilever. Always. Resting against the flexible membrane or luxurious flat cushion upholstered in leather or fabric. Supreme sitting comfort. Exchanging ideas with transparency of vision.





The elegant office chairs open up and open mind were developed by designer Mathias Seiler and have received numerous awards: **Sedus open mind swivel chair** – iF design award (2003), red dot award for outstanding design quality (2003), Design Award of the Federal Republic of Germany (Commendation 2004). **Sedus open up swivel chair** – iF product design award (2001), red dot award for outstanding design quality (2001), NeoCon Silver Award USA (2001), GOOD DESIGN Award (2001), International Design Award Baden-Württemberg in Silver (2002), Design Award of the Federal Republic of Germany (Commendation 2002), Innovation Award Architecture and Office (2002). **Sedus open up work assistant** – International Design Award Baden-Württemberg in Silver (2003).



Conference chair
with membrane-covered backrest and
flat cushion, polished aluminium base



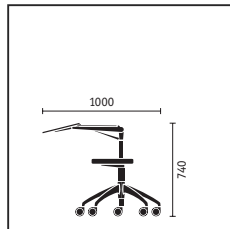
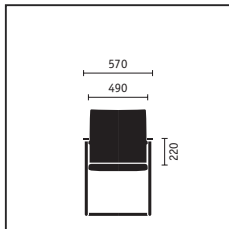
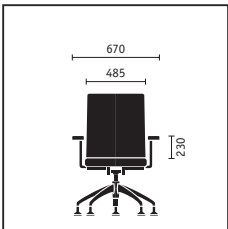
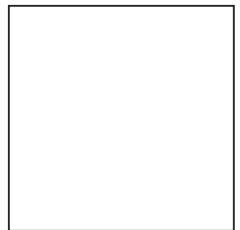
Cantilever
with membrane-covered backrest and
flat cushion, chromed steel base



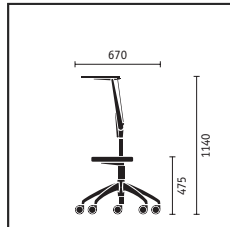
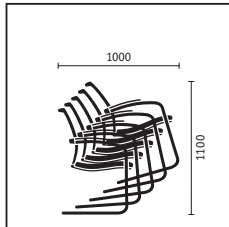
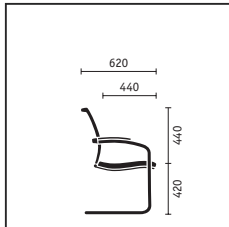
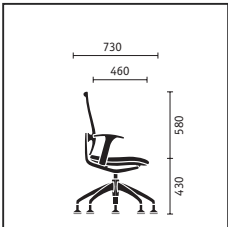
Ottoman with height-adjustable (from 380 to
500 mm) and swivelling legrest (630 x 330 mm),
polished aluminium base



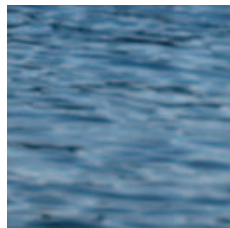
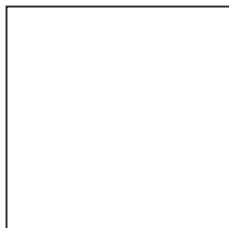
Work assistant with height adjustable (max.
height 1140 mm) writing tablet (680 x 300
mm) and swivelling legrest (660 x 330 mm)



Tested and recommended
Aktion Gesunder Rücken
(campaign group for
healthier backs)
www.agr-ev.de
Quality Office
www.quality-office.org



Recyclability, quality
and the timeless design
of our products are a
core component of the
Sedus environmental
protection philosophy:
www.sedus.com



	open mind	open up	Conference chair	Canti-lever	Ottoman	Work assistant
Seat mechanisms						
"Similar" mechanism	■	■				
"Similar" mechanism with seat tilt adjustment up to 4°	□	□				
Backrest technical features						
Height-adjustable lumbar support	□	□	□			
Adjustable backrest pressure	■	■				
Dorsokinetic backrest		■	■			
Backrest technical features						
Gas lift mechanism	□					
Gas lift mechanism with mechanical depth springing		■	□			
Sedo-Lift mechanism	■					
Central seat springing (seat height not adjustable)			■			
Automatic return (seat height not adjustable)			□			
Frame versions						
Aluminium base, powder-coated in black	■	■	■		□	□
Aluminium base, powder-coated in white aluminium	□	□	□		■	■
Polished aluminium base	□	□	□		□	□
Steel frame, powder-coated in black				■		
Steel frame, powder-coated in white aluminium				□		
Steel frame, chromed				□		
Model colour black						
	■	■	■	■		
Armrests						
Without armrests	□	□	□			
Basic plastic armrests	■	■	■			
Basic plastic armrests with leather finish	□	□	□			
3D adjustable armrests with Softtouch finish	□	□				
3D adjustable armrests with gel finish	□	□				
3D adjustable armrests with leather finish	□	□				
Armrests with plastic finish				■		
Armrests with extra-long plastic finish (5 cm)				□		
Armrests with leather finish				□		
Features						
Headrest with leather cushion, adjustable for height and tilt	□	□				
Large seat (with 30 mm larger seat depth)		□				
Sliding seat (with 60 mm depth adjustment)	□					
Contrasting shade for backrest upholstery	□	□	□	□		
Backrest with flat cushion	□	□	□	□		
Writing tablet in black plastic						■
Writing tablet in black ash veneer						□
Hard castors for soft floors	■	■	□		□	■
Soft castors for hard floors	□	□	□		□	□
Stainless steel glides			■		■	
Plastic glides				□		
Felt glides			□	□	□	
Stackable (up to 5 high)				□		

□ optional ■ standard



Companies, people and the environment all benefit.

Sedus is committed to transforming working in an office into a profitable experience for all. For the benefit of both companies and their employees. This mission statement is laid down in the corporate policy, to which the thoughts and actions of everyone at Sedus are bound. It is an ideal which encompasses all of the important aspects for office work today and tomorrow and, in order to achieve it, Sedus relies on the areas of competence Holistics and Customer Orientation, Quality and Sustainability, and the concept Place 2.5.

With the concept Place 2.5, Sedus has developed a unique and innovative approach – the new office culture of productive well-being. The concept is based on perfect ergonomics, functionality and working conditions, and is embedded in office environments designed to enhance well-being, in which people like to work and are therefore more productive. Design, light, acoustics, atmosphere and air are just some of the most important elements.

The concept is testimony to Sedus' holistic and customer-orientated way of thinking. After all, companies today do not need more pieces of office furniture, but rather seamless and needs-orientated solutions for efficient working processes. They need future-proof office working

environments that are consistent with the corporate culture. Sedus delivers just that with its comprehensive, flexible product range catering for all requirements and with its individual consulting and planning services.

Quality and sustainability have ultimately been the cornerstone of Sedus' success for more than 50 years now. In addition to working in a way that conserves resources, designing products which are recyclable, using ecologically tested materials and being energy-aware in its manufacturing, Sedus pursues one thing above all else: Product quality that lasts, because that's what is best for the environment.

For further information, visit www.sedus.com and www.place2point5.com

Company:

DIN EN ISO 9001

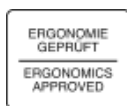
DIN EN ISO 14001

EMAS III Environmental management

Around the world, Sedus adheres to the principles of the UN Global Compact for human rights, labour standards, the environment and anti-corruption.

open mind/open up:

- 5-year Sedus guarantee
- Ergonomics approved
- Safety-tested
- Toxproof
- Quality Office
- Greenguard
- Good environmental choice Australia
- Aktion Gesunder Rücken e.V. (Campaign group for healthier backs)





www.sedus.com